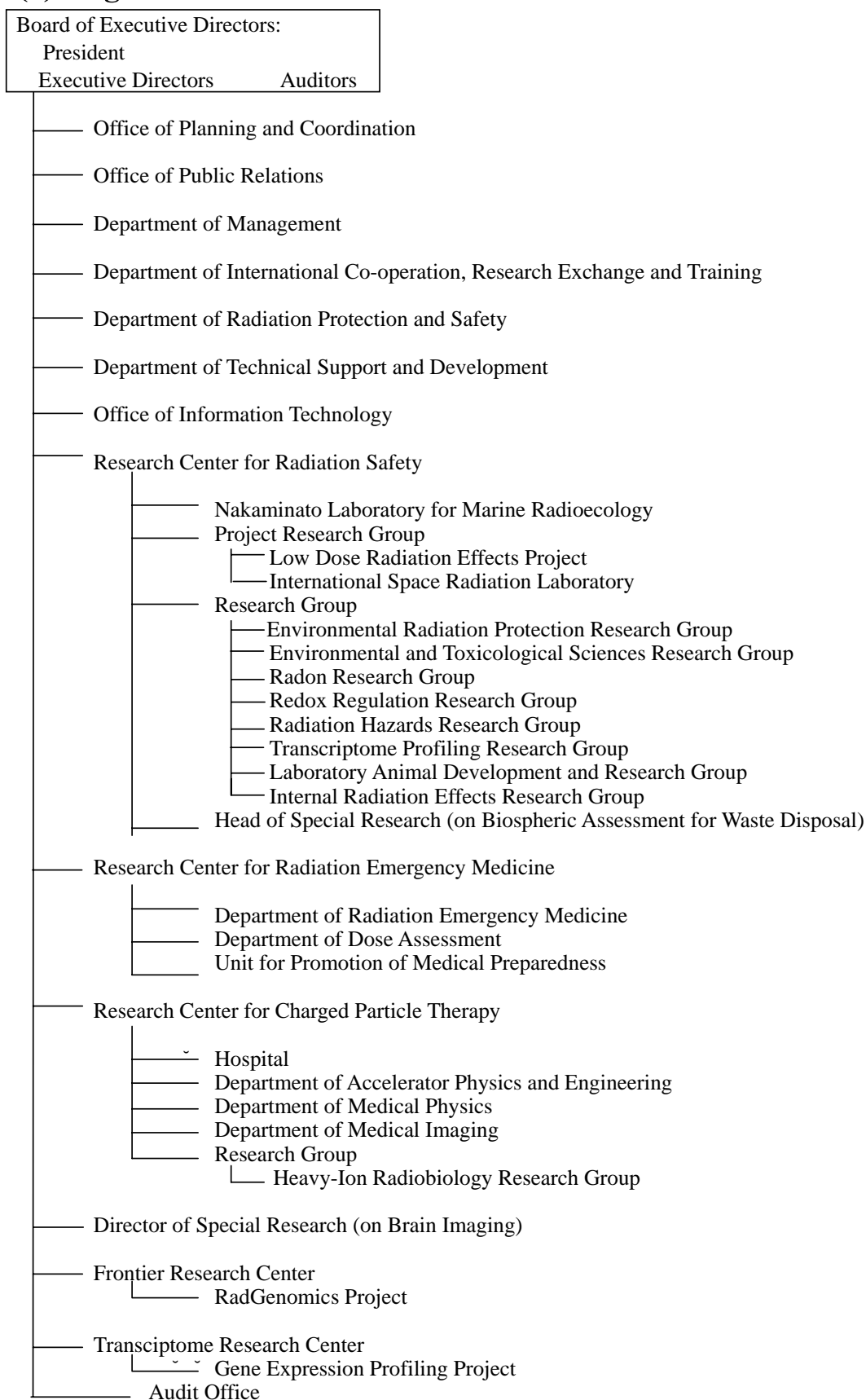


2. Organization Chart and Budget

(1) Organization



(2) Budget(2003.4~2004.3)

Total	16,110 million yen	%
Management expenses grants	13,700 million yen	85%
Facilities maintenance grants	323 million yen	2%
Self-income	761 million yen	5%
Research contracts and competitive grants	1,326 million yen	8%

